

Surface Preparation on Vehicle and Passenger Ferry Boats

*A west coast Port Authority uses Sponge-Jet®
Sponge Blasting™ System to remove heavy non-skid
marine epoxy with minimal service interruption*

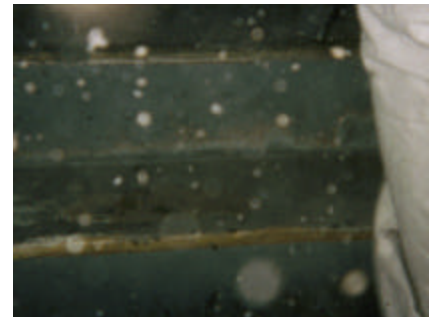


A west coast Port Authority maintains commuter ferry boats that have high passenger traffic areas which needed stripping and repainting. Maintenance managers searched for a way to allow continued commuter operations during the maintenance project. Confined bays, hallways, stairs and treads leading to and from the passenger and automobile decks were to be cleaned, blasted and re-painted without causing damage to sensitive equipment nearby.

The decision was made to use Silver Sponge Media™ abrasives in place of other alternatives due to the following process characteristics:

■ **Low Airborne Dust** - Sensitive equipment such as engines, generators and air-intakes were close to the blast areas, making airborne dust suppression critical. Sponge Media abrasives carry conventional abrasives in pliant and porous particles, which entrap and confine much of what would normally become airborne dust.

■ **Quick Clean-up** - Clean-up times had to be minimized because blasting and painting were only permitted between the hours of two and five a.m. Pliant Sponge Media inherently limits media rebound, because it absorbs collision energy caused by the media's impact on the substrate. The abrasives fall in close proximity to the blaster, making clean-up easier.



Visit Sponge-Jet, Inc. at
www.SpongeJet.com
or call **603-610-7950**
to learn more about the
Sponge Blasting System

The Port Authority had favorable results as operators cut through the 10 to 30-mil marine epoxy and anti-skid top coats. Work output was improved by 50%, as Sponge Blasting allowed for quick set-up, easy mobility and lean-up. Three years later, the coating is still performing to specification.